

NAV: SAR 7.0290 per unit MTD: -0.99% YTD: -9.61%

The AUDI IPO Fund

The Audi IPO Fund

An open-ended investment fund

The Fund's Objective:

Long term capital appreciation by investing in Saudi Shariah compliant IPOs and companies listed on the Saudi Exchange during the past five years. The fund will have a 25% minimum investment in equities, and will be based on an opportunistic, active bottom up investment strategy.

Issue Price

10

Liquidity

Bi-Weekly (Monday and Thursday)

Base Currency

Saudi Riyal

Fund Launch Date

September 18, 2014

NAV as of 31/03/2017

7.0290

Fund Size as of 31/03/2017

147,597,127.59

Benchmark:

Customized IPO Index

Contacts

John Gebeily

Head of Mena Equities

Phone: 966-1-2199375

Mobile: 966-56-1506327

Email: John.Gebeily@audicapital.com

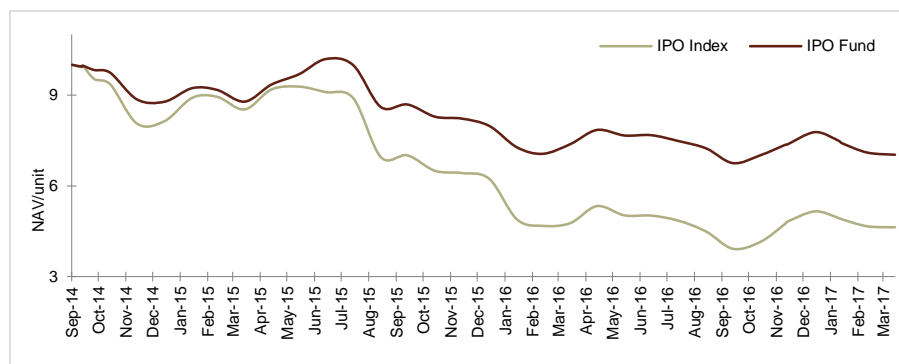
Waleed Al-Nekhaish

Head of Saudi Equities - Fund Manager

Phone: 966-1-2199373

Email: Waleed.AINekhaish@audicapital.com

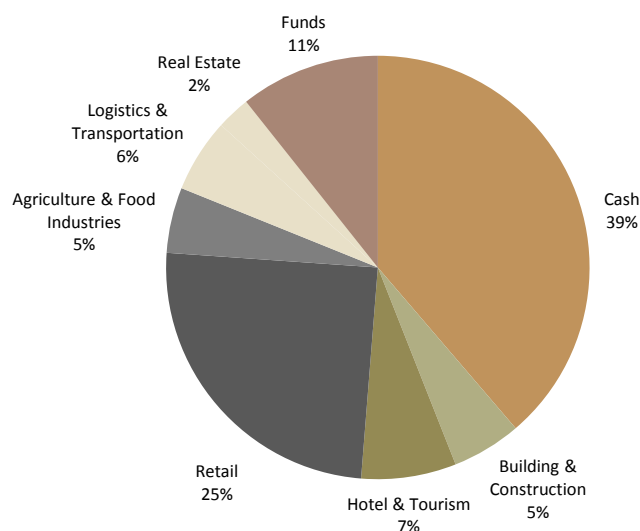
Cumulative Performance Since Launch



Performance History

Cumulative (%)	IPO	IPO INDEX	Active Performance
MTD	-0.99	-0.71	-0.28
1 Month	-0.99	-0.71	-0.28
3 Months	-9.61	-10.20	0.59
YTD	-9.61	-10.20	0.59
Since Inception (Sept 18, 2014)	-29.71	-53.67	23.96

Allocation By Sector



Audi Capital - KSA

Centria Building • Prince Mohammad bin Abdulaziz Road (Tahlia) • P.O.Box 250744 • Riyadh 11391 • Saudi Arabia
Phone: +966 1 2199300 • Fax: +966 1 4627942 • Email: contactus@audicapital.com • www.audicapital.com

This update does not constitute an offer of shares and should not be relied upon by any person accruing or otherwise dealing in shares of the company. Subscription of shares in the company may only currently be made on the terms of the placing memorandum of the company. It should be noted that investment in the fund is only suitable for sophisticated investors who are aware of the risks of investing and should not be re-graced as long term. Please remember that past performance is not necessarily a guide to the future. Market and currency movements may cause the value of shares and the income from them to fluctuate and you may get back less than you invested when you decide to sell your share. The information contained herein, including any expression of opinion, has been obtained from or is based upon sources believed to be reliable, and is believed to be fair and not misleading; however, Audi Capital does not guarantee its accuracy or completeness. The information contained herein must not be reproduced in whole or in part without the prior written consent of Audi Saudi Arabia.

Audi Capital

Regulated by CMA - License no. 06017-37