



# Chimera FTSE ADX 15 ETF - Inc.

OCTOBER 2025 FACT SHEET

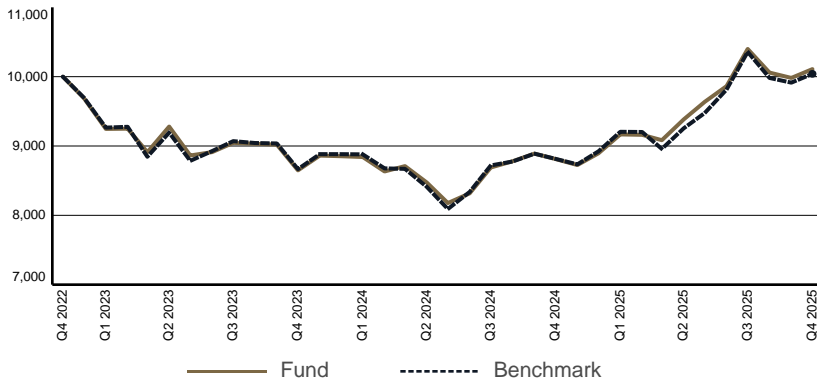
This is a marketing communication

# Lunate

## FUND OVERVIEW

Chimera FTSE ADX 15 ETF - Income (CHADX15) is an exchange traded fund that seeks to provide investment returns, before fees and other costs, that closely correspond to the performance of the FTSE ADX 15 (FADX 15) Index. The fund allows an access point to the top 15 companies listed on the ADX. The dividends received by the fund will be distributed semiannually when available.

## GROWTH OF 10,000 SINCE INCEPTION



Dividend of AED 0.03740/share:Ex Date on 30th June 2025

## PERFORMANCE

|           | 1 Month | 3 Month | YTD    | 1 Year | 3 Year | 5 Year  | Since Inception* |
|-----------|---------|---------|--------|--------|--------|---------|------------------|
| ETF       | 1.28%   | -2.79%  | 13.65% | 14.72% | N/A%   | N/A     | 1.09%            |
| Benchmark | 1.28%   | -3.06%  | 12.52% | 13.91% | 1.51%  | 136.20% | 0.41%            |

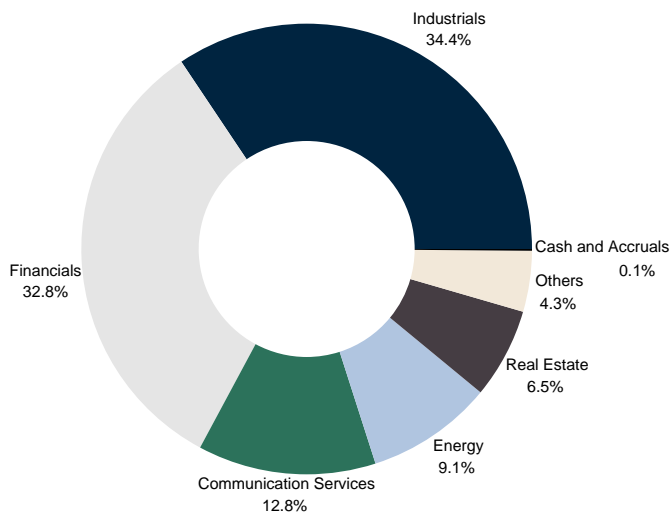
Performance quoted represents past performance, which is no guarantee of future results. Performance returns for periods of less than one year are not annualized and have been calculated based on changes in the net asset value of the fund rather than the last quoted price. Performance return reflects price movements (capital gains or losses) of the underlying securities.

\* These returns, for both the fund and the index, are calculated from inception of the fund on 23rd November 2022.

Important Information: The value of your investment and any income from it will vary and your initial investment amount cannot be guaranteed. ETFs trade on exchanges like stocks and are bought and sold at market prices which may be different to the net asset values of the ETFs.

Net Asset Value calculated by Lunate Capital LLC as the Fund Administrator have been reconciled against the Net Asset Values produced by BNY Mellon as a fund service provider. All financial information of the fund has been cross verified by Lunate Capital LLC against information produced by BNY Mellon as a fund service provider.

## SECTOR ALLOCATION



## KEY FACTS

|                           |                    |
|---------------------------|--------------------|
| Asset Class               | Equity             |
| Fund Base Currency        | AED                |
| Share Class Currency      | AED                |
| Inception Date            | 23rd Nov 2022      |
| Benchmark                 | FTSE ADX 15 Index  |
| ISIN                      | AEC01137C226       |
| Total Expense Ratio       | 1.00%              |
| Dividend Treatment        | Distributing       |
| Domicile                  | UAE                |
| Methodology               | Replicating        |
| Product Structure         | Physical           |
| Rebalance Frequency       | Semiannually       |
| Management Company        | Lunate Capital LLC |
| NAV (AED)                 | 3.710              |
| AUM (AED mln)             | 244.86             |
| Shares Outstanding        | 66,000,000         |
| Number Of Holdings        | 15                 |
| ETF's Distribution Yield  | 1.16%              |
| Benchmark Ticker          | FADSM15            |
| Type                      | Umbrella           |
| Total Market Cap (AED bn) | 2,042.9            |
| P/E                       | 27.68x             |
| P/B                       | 3.94x              |
| ROE                       | 19.62%             |

## DEALING INFORMATION

|                  |                               |
|------------------|-------------------------------|
| Exchange         | Abu Dhabi Securities Exchange |
| Ticker           | CHADX15                       |
| Bloomberg Ticker | CHADX15                       |
| Reuters RIC      | CHADX15.AD                    |
| CUSIP            | M2366F163                     |
| Trading Currency | AED                           |
| Trading Hours    | 10am - 3pm GST                |
| Settlement       | T + 2                         |

## TOP 10 HOLDINGS

|  |        |
|--|--------|
| International Holding Company PJSC                   | 32.47% |
| First Abu Dhabi Bank PJSC                            | 16.10% |
| Emirates Telecommunications Group Company PJSC       | 12.78% |
| Abu Dhabi Commercial Bank PJSC                       | 7.95%  |
| Abu Dhabi Islamic Bank PJSC                          | 7.82%  |
| Aldar Properties PJSC                                | 6.48%  |
| ADNOC Gas PLC  | 4.56%  |
| Adnoc Drilling Company PJSC                          | 2.76%  |
| Abu Dhabi National Oil Company for Distribution PJSC | 1.94%  |
| Multiply Group PJSC                                  | 1.91%  |



## GLOSSARY

**Total Expense Ratio (TER):** A measure of the total costs associated with managing and operating the fund. The TER consists primarily of the management fee (which covers costs for maintaining the fund such as trustee, custodial, and accounting fees) plus other operating expenses. It is expressed as a percentage of the fund's total net asset value.

**ETF's Distribution Yield:** The Distribution Yield is calculated by taking the sum of distributions made during the trailing 12 months divided by the most recent month-end Net Asset Value (NAV). Please note that this yield does not necessarily reflect the yield that an investor will receive, and distributions may vary from time to time

**Product structure:** Indicates whether the fund buys the actual underlying securities in the index (i.e. Physical) or whether the fund gains exposure to those securities by buying derivatives, such as swaps (known as 'synthetic').

**Methodology:** Indicates whether the product is holding all index securities in the same weight as the index (replicating) or whether an optimised subset of index securities is used (optimised/sampled) in order to efficiently track index performance.

**Market capitalisation:** The aggregate value of a stock calculated by multiplying the number of shares outstanding by the current price. For the fund, this is the sum of the market capitalisation of each stock held by the fund.

**Weighted average market cap:** The weighted average market capitalisation of all stocks held by the fund.

**Price earnings ratio (P/E):** The share price of a stock divided by its earnings per share (EPS) over the past year. For the fund, this is the weighted average P/E ratio of all stocks held in the fund. Stocks with negative P/E ratios are excluded from the calculation.

**Price book ratio (P/B):** The share price of a stock divided by its book value per share. For the fund, this is the weighted average P/B ratio of all stocks held in the fund.

**Return on equity:** This is the amount of net income of a company expressed as a percentage of shareholders' equity. It reveals how much profit a company generates with the money shareholders have invested. For the fund, this is the weighted average return on equity of all stocks held in the fund. Stocks with a negative return on equity are excluded from the calculation.

**Earnings growth rate:** A measure of growth in a company's net income over a specific period of time. For the fund, this is the weighted average growth rate of all stocks held in the fund. Stocks with a negative growth rate are excluded from the calculation.

## DISCLAIMER

Chimera FTSE ADX 15 ETF (CHADX15) is an exchange traded fund ("ETF") developed solely for Lunate Capital LLC (together with its affiliates "Lunate"). Investors should carefully consider the investment objectives and risks as well as charges and expenses related to the ETF before investing. The summary and full prospectuses contain this and other information about CHADX15. Read the prospectus carefully before investing. Investment in the products mentioned in this document may not be suitable for all investors.

This document is for informational purposes only. Any unauthorized use is strictly prohibited. It is educational in nature and is not, nor is it intended to be, a recommendation or advice for any specific investment product, strategy, ETF, or other purpose. Nor is this document an offer to sell or a solicitation of an offer to buy any securities, product, or service. Any examples herein are for illustrative purposes only. Prior to making any investment or financial decisions, an investor should see individualized advice from an authorized professional.

The performance quoted is past performance and is not a guarantee of future results. Investment return and principal value will fluctuate, so that an investor's units in the ETF, when sold or redeemed, may be worth more or less than the original cost. Current performance may be higher or lower than that quoted. ETFs have fees that reduce their performance, indexes do not. Investors cannot invest directly in an index. Index performance and results are unmanaged and do not reflect the deduction of any fees or expenses applicable for ETF. The index performance reflects all items of income, gain and loss and the reinvestment of dividends and other income. The price of the investments may go up or down and the investor may not get back the amount invested. Your income is not fixed and may fluctuate. ETF returns do not reflect the brokerage fees or the bid/ask spread that investors pay to buy and sell ETF securities on the Abu Dhabi Securities Exchange ("ADX").

Chimera FTSE ADX 15 ETF is managed by Lunate Capital LLC with the objective to track the FTSE ADX 15, an unmanaged index provided by London Stock Exchange Group PLC. This document may not be distributed without written authorization from Lunate.

No representation, warranty, or condition, express or implied, is made by or on behalf of Lunate or CHADX15 (or any affiliates) as to the accuracy or completeness of any information herein. Lunate and CHADX15 (and their affiliates) are not responsible, nor do they accept any liability, for any inaccuracies in or omissions related to this document or liability for any loss or damage howsoever caused arising directly indirectly from the use or misuse of this information, services and materials. All such information, services and materials are provided "as is" and "as available" without warranty of any kind.

Chimera FTSE ADX 15 ETF is not in any way connected to or sponsored, endorsed, sold, or promoted by the London Stock Exchange Group PLC and its group undertakings, including FTSE International limited (collectively, the "LSE Group"), or the ADX (LSE Group and ADX are, together, the "Licensors"). FTSE Russell is a trading name of certain of the LSE Group companies.

All rights in the FTSE ADX 15 (the "Index") are owned by and vest in the Licensors. "FTSE(R)" and "FTSE Russell" are a trademark(s) of the relevant LSE Group company and are used by any other LSE Group company under license. "ADX" is a trademark of ADX and is used by the LSE Group under license.

The Index is calculated by or on behalf of FTSE International Limited or its affiliate, agent, or partner. The Licensors do not accept any liability whatsoever to any person arising out of (A) the use or reliance on or any error in the Index or (B) investment in or operation of Chimera FTSE ADX 15 ETF. The Licensors make no claim, prediction, warranty, or representation either as to the results to be obtained from the Chimera FTSE ADX 15 ETF or the suitability of the Index for the purpose to which it is being put by Lunate Capital LLC.

